

Burnham Hollow

By Kodiak Construction



Kodiak
CONSTRUCTION INC.
20th YEAR ANNIVERSARY

William (Bill) Chase
Associate Real Estate Broker
wchase@bhhsblake.com
Direct Line: (518) 209-1960



**BERKSHIRE
HATHAWAY**
HomeServices
Blake, REALTORS®

Burnham Hollow

By Kodiak Construction

59 Custom Built Homes

Established neighborhood minutes to Saratoga Springs

Town of Wilton

South Glens Falls Central School District

Public Sewer, Water & Natural Gas

5 miles to Moreau Lake State Park

.46 to 3.85 acres wooded homesites

- SOLD
- LOT HOLD
- MODEL
- QUICK DELIVERY



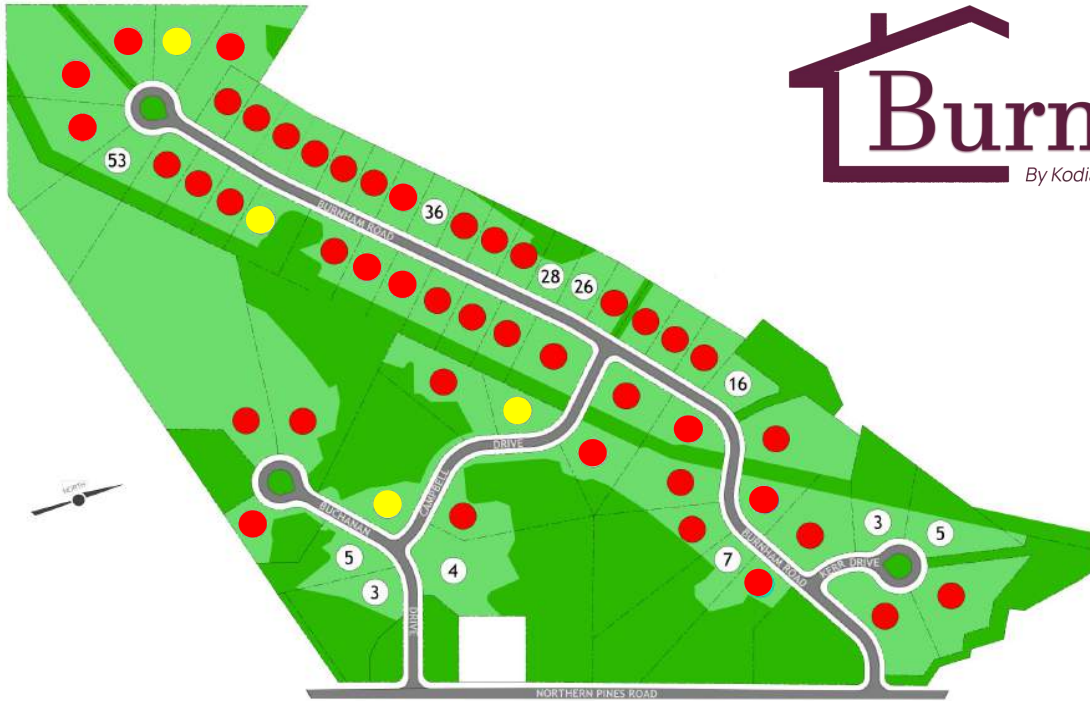
Kodiak
CONSTRUCTION INC.
20 YEAR ANNIVERSARY

William (Bill) Chase
Associate Real Estate Broker
wchase@bhhsblake.com
Direct Line: (518) 209-1960

**BERKSHIRE
HATHAWAY**
HomeServices
Blake, REALTORS®

Burnham Hollow

By Kodiak Construction



Homesite	Description	Premium	Homesite	Description	Premium
3 Kerr Drive	1.22 acres	+\$5,000	7 Burnham Road	1.97 acres	\$0
5 Kerr Drive	1.14 acres	+\$5,000	16 Burnham Road	0.50 acres	-\$5,000
1 Campbell Drive	2.56 acres	+\$5,000	26 Burnham Road	0.48 acres	-\$5,000
9 Campbell Drive	0.68 acres	\$0	28 Burnham Road	0.46 acres	-\$5,000
3 Buchanan Drive	1.61 acres	+\$5,000	36 Burnham Road	0.46 acres	\$0
4 Buchanan Drive	3.92 acres	+\$15,000	45 Burnham Road	0.86 acres	\$0
5 Buchanan Drive	0.98 acres	+\$5,000	53 Burnham Road	1.82 acres	+\$25,000
			54 Burnham Road	0.83 acres	+\$15,000

Included Features

Homesite

- Town of Wilton
- South Glens Falls Central School District
- Public Water, Sewer, and Natural Gas

Exterior Finishes

- Owens Corning architectural asphalt shingles
- Low maintenance Norandex Cedar Knolls vinyl lap siding & soffit with aluminum fascia, per plan
- Low maintenance Norandex Cedar Knolls vinyl board & batten or vinyl shakes on front elevation, per plan
- VWD white vinyl windows with full screens, grilles between the glass and tilt-in for easy cleaning
- Therma-Tru insulated Smooth Star painted front entry door, per plan
- Egress window in lower level
- Clopay Premium series overhead garage door with one row of glass, opener & two remote controls, size per plan
- Covered front porch with brushed concrete floor, miratec wrapped columns and vinyl soffit ceiling
- Brushed concrete front sidewalk from driveway to front porch
- \$3,000 Asphalt paved driveway allowance
- \$4,500 landscape design allowance for mulch beds along front elevation, plantings & hydro-seeding
- \$2,500 Lawn irrigation sprinkler system allowance

Construction Specifications

- 9' First Floor wall height: 8' Second Floor wall height: 7'-7" Lower-Level wall height
- Blower Door tested house at completion to show low air leakage
- R21 Exterior wall insulation; R21 Basement exterior wall insulation, floor-to-ceiling
- R38 Exterior ceiling insulation
- Complementary 8 hours of time with interior design firm Plum & Crimson for interior selections

Mechanical Systems

- 95% Efficient forced air heating system
- 13 SEER Air conditioning system
- One programmable single zone thermostat for heating & cooling system control
- Efficient gas-fired hot water heater
- Two exterior water spigots, one each in the front and rear of the home
- PEX waterlines throughout, PVC waste lines
- Panasonic bath fans, vented directly to the exterior per Code
- Electric washer hook up
- Electric dryer hook up

Electrical

- 200-amp Electrical service panel served by underground power feed
- \$3,500 Light fixture allowance
- One ceiling fixture per room
- Five LED 4" razors, or similar, recessed in kitchen
- Interconnected smoke & carbon monoxide detectors
- One coaxial in family room
- One coaxial for Owner to connect to wireless router in foyer closet
- Outlets and light switches per Code

Interior Finishes

- Heat-N-Glo SL7 direct vent gas fireplace with standard surround and mantel
- Red oak stair treads with painted risers & stringers installed from the first floor to the second floor
- Pine stair treads with pine risers and stringers installed from the lower level to the first floor
- Wall-mounted red oak handrail, per code
- Masonite hollow-core interior 2-panel, or equal, interior doors
- 3-1/2" Windsor interior window and door casing
- 5-1/4" Windsor-compatible base, shoe installed at hard surface floor
- \$8,000 Shelving allowance for pantry and closets
- Schlage interior door handles in black finish, from standard selections
- Prime all drywall. Primer serves as the flat white finish for the ceilings and inside standard depth closets
- Two coats wall color applied to the walls in the house from Kodiak Construction's "White and Lights" selections
- Two coats trim white to all interior trim and interior doors, sprayed Sherwin Williams "Pure White"
- Stain the stair treads to the second floor to closely match the hardwood floor color

Flooring

- Provenza Affinity 7.48" wide oak engineered hardwood in main living areas
- Carpet in all bedrooms, upstairs hallway, and study/office
- Ceramic Tile: Primary Bathroom 12"x24" (\$5/sf tile allowance)
- Mannington Adura 12"x24" Luxury Vinyl Tile with Grout: Mudroom, Laundry Room, Guest Bathroom

Kitchen

- Timberlake Portfolio cabinetry and kitchen island, per allowance
- Double trash-can pullout cabinet, soft-close drawers and doors
- Quartz or Granite countertop, per allowance
- Stainless steel undermount sink
- Delta single handle kitchen faucet, per allowance
- \$7,000 Stainless steel kitchen appliance allowance

Primary Bathroom

- 34" high Dual sink vanity, Timberlake Portfolio cabinetry, per allowance
- Granite countertop with two white rectangular undermount sinks and 4" backsplash, per allowance
- Delta Ashlyn 8" Widespread Faucets in "Matte Black" and coordinating shower trim, per allowance
- White 36" x 60" fiberglass shower unit, per allowance
- American Standard Edgemere elongated chair height toilet, per allowance
- Bathroom accessories, per allowance

Guest Bathroom

- 34" high single sink vanity, Timberlake Portfolio cabinetry, per allowance
- Granite countertop with one white rectangular undermount sink and 4" backsplash, per allowance
- Delta Ashlyn single handle faucet in "Matte Black" and coordinating shower/tub trim, per allowance
- 60"x32" Clarion fiberglass shower/tub unit with Subway Tiled Walls and 18" Apron, White, per allowance
- American Standard Edgemere elongated chair height toilet, per allowance
- Bathroom accessories, per allowance

Powder Bathroom (per plan)

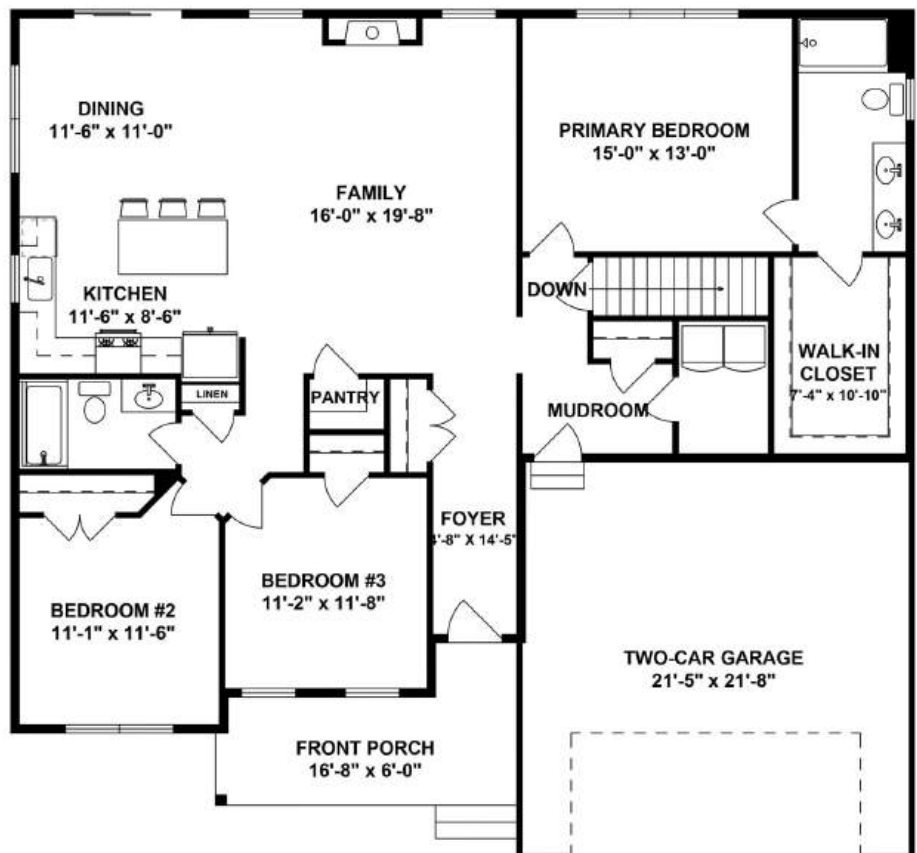
- American Standard Edgemere pedestal sink, per allowance
- Delta Ashlyn single handle faucet in "Matte Black", per allowance
- American Standard Edgemere elongated chair height toilet, per allowance
- Bathroom accessories, per allowance



Optional Features Shown

Adams

- 1,630 Square Feet
- 3 Bedrooms, 2 Bathrooms

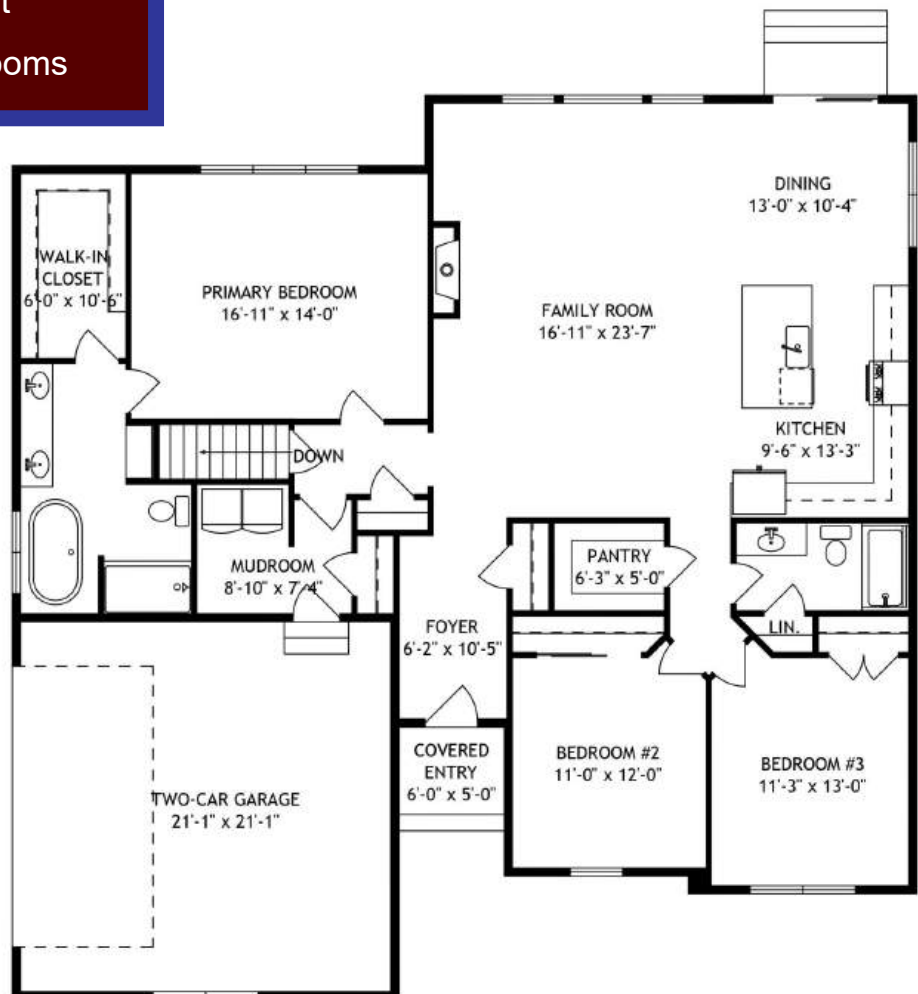




Optional Features Shown

Madison

- 1,844 Square Feet
- 3 Bedrooms, 2 Bathrooms

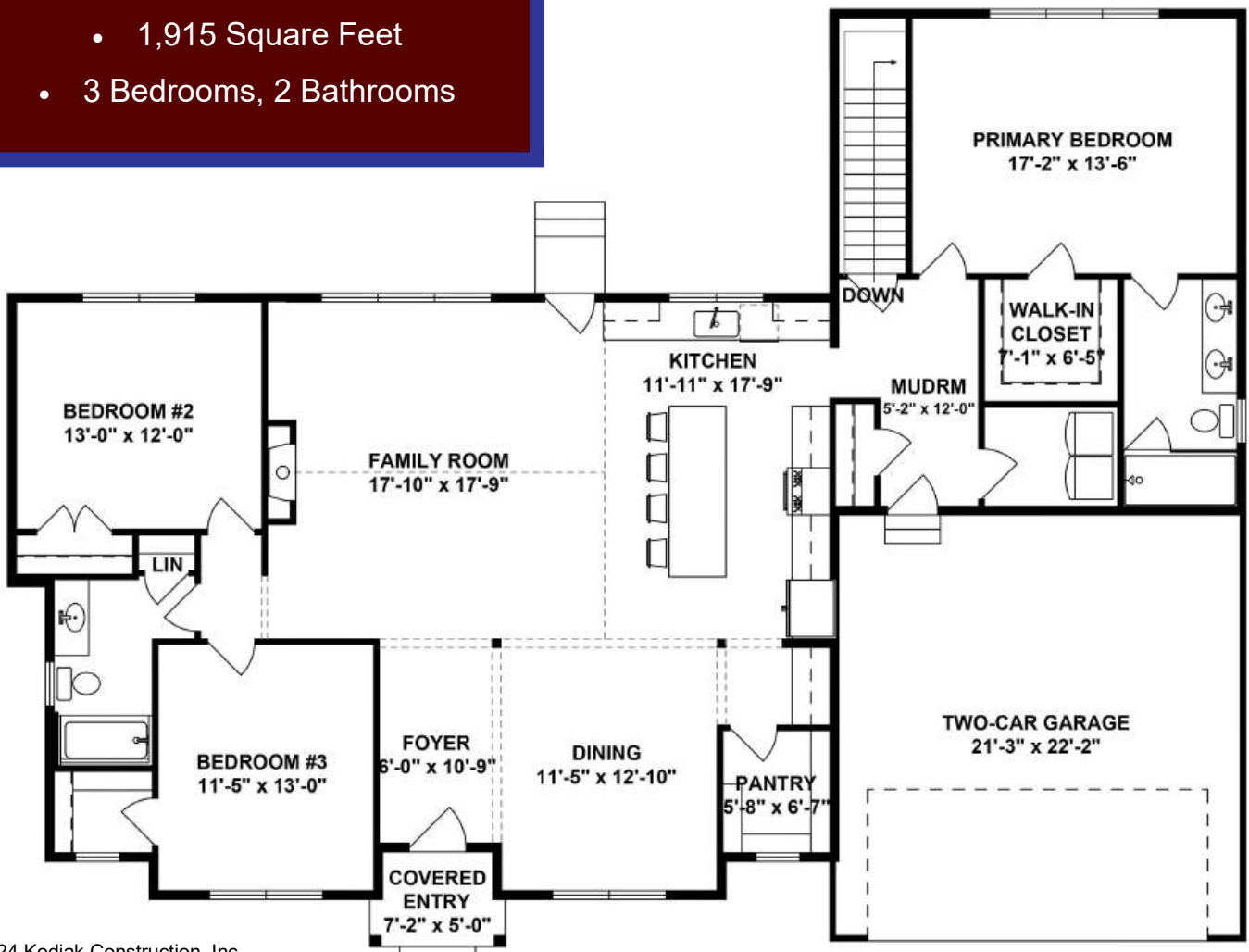




Optional Features Shown

Grant

- 1,915 Square Feet
- 3 Bedrooms, 2 Bathrooms

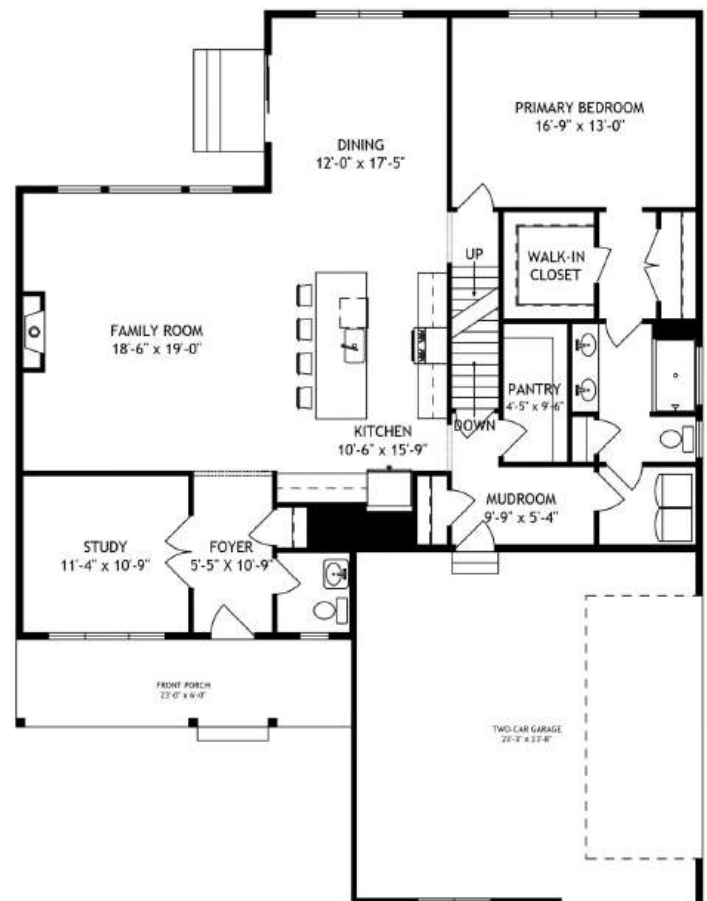
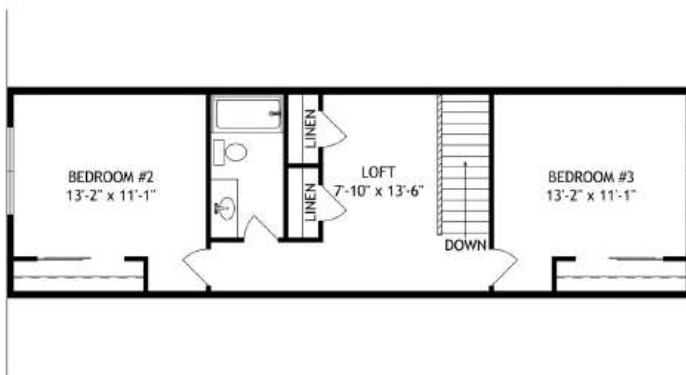




Optional Features Shown

Carson

- 2,336 Square Feet
- 3 Bedrooms, 2.5 Bathrooms
- First Floor Study
- Second Floor Loft



Designed For You

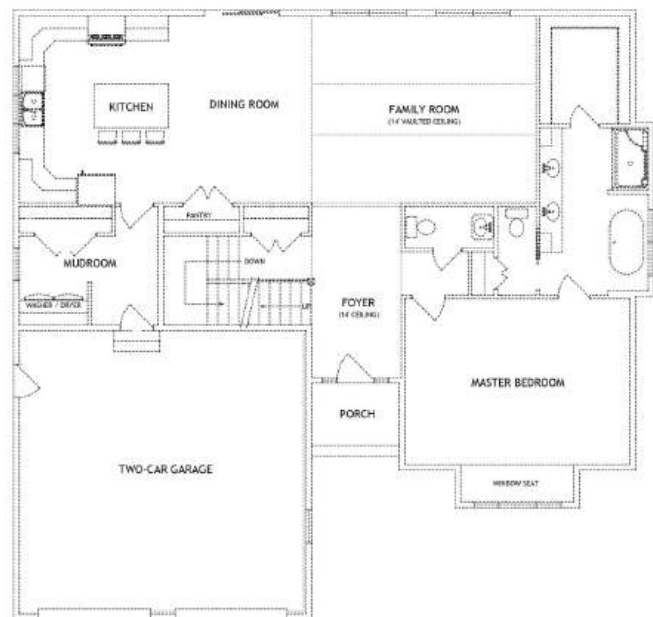
Conceptual Design Services



Develop the conceptual design for the construction of a single-family residence.

\$1,500 flat fee up to 2,700 sq ft.

- Create Your 2D Floor Plans
- Create Your Four 2D Elevations
- Includes two modification sets



Kodiak
CONSTRUCTION INC.
20 YEAR ANNIVERSARY