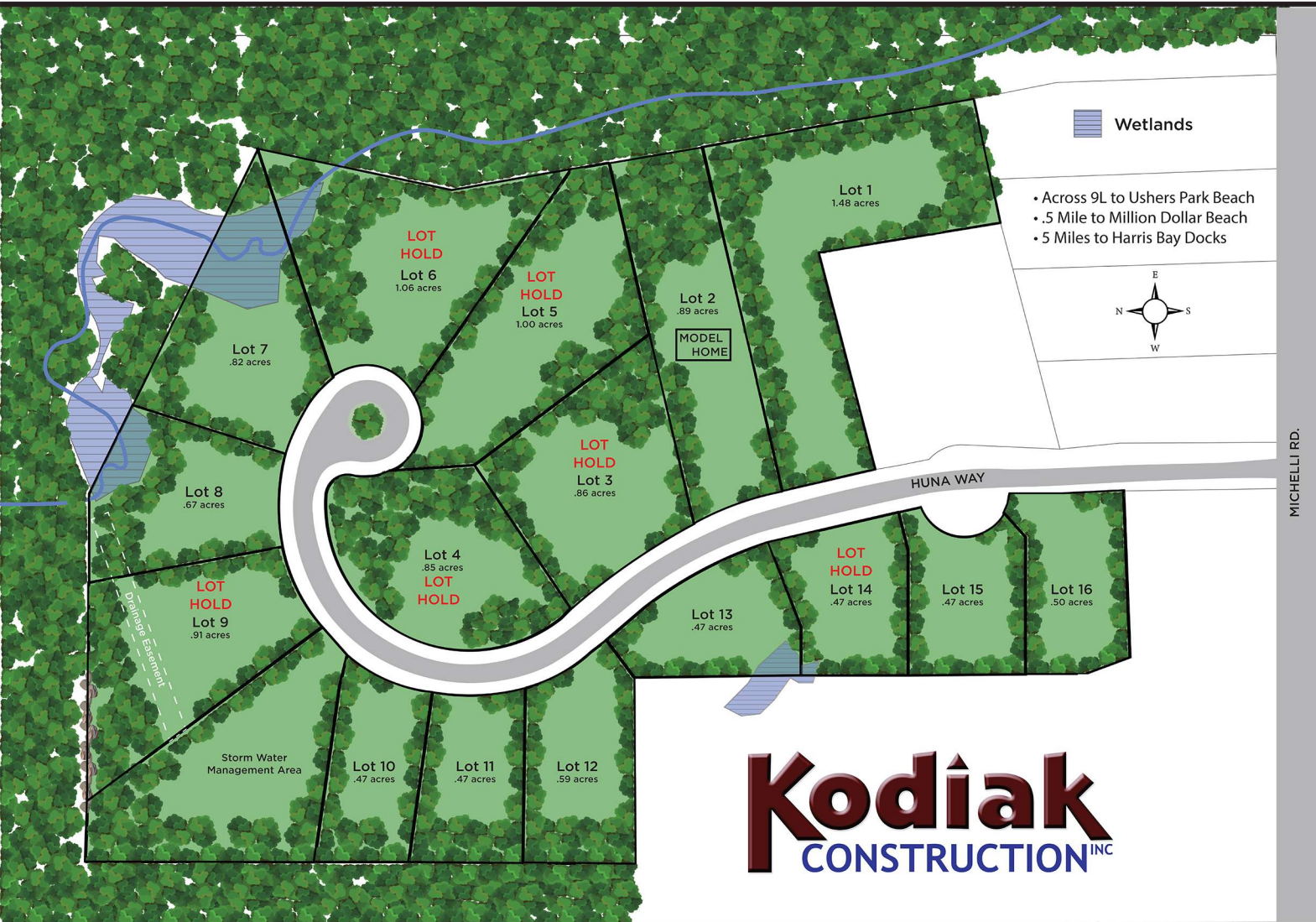


MOUNTAINS EDGE

at Lake George

A Community of Private, Custom-Crafted Homes set Between the Mountains and the Lake




Kodiak
CONSTRUCTION^{INC}

GERALD MAGOOLAGHAN
Lic. Real Estate Salesperson
cell: 518-788-8220
Gerry@TheCartierGroup.com

cartier
REAL ESTATE GROUP

HEATHER WILLIG
Lic. Real Estate Salesperson
cell: 518-339-1534
Heather@TheCartierGroup.com



 Harris Bay Docks
5.7 Miles from Mountains Edge

 1 - The Garrison Restaurant
2 - East Cove Restaurant
3 - George's Restaurant